



# StructureScan™ Mini Series

## Complete GPR Systems for Concrete Inspection and Analysis



### Compact Design

The StructureScan Mini makes concrete inspection easy in tight spaces

### Integrated Tool

All-in-one concrete inspection tool - antenna, positioning system and control unit combo

### System Flexibility

The StructureScan Mini is offered in two versions, the original system with our popular 1600 MHz antenna, or the new system with a 2600 MHz antenna for high resolution data

### Durability

Ruggedized plastic casing and wheels for long-lasting performance

### Value

The perfect blend of price and performance, backed by a two-year warranty

- |                                  |  |
|----------------------------------|--|
| 1 All-in-One handheld GPR system | 3 Easy to use operator interface with color display screen |
| 2 Ergonomic handle and controls  | 4 Survey wheel encoder                                     |
|                                  | 5 Guiding laser for locating                               |



[www.geophysical.com](http://www.geophysical.com)

# StructureScan Mini Series

Introducing the Mini - our smallest StructureScan system. The StructureScan Mini Series is ideal for locating the position and depth of rebar, conduits, post-tension cables, and voids in concrete. The high resolution, LED backlit 5.7" display provides a detailed image of the subsurface structure. In addition to viewing, the data image can be stored directly to a SD-RAM card for later playback, or transferred to a computer for printing or integration into a report.

The StructureScan Mini Series offers a lightweight alternative to other GPR systems, weighing in at just over three pounds. The small size of the unit makes it easy to transport to the job site and once on site, convenient to scan around obstacles and into tight spaces. The Mini is very easy to use – new users will become proficient in a few short hours. The Mini aids in target detection by marking the data on screen with a small dot when characteristics of rebar or conduit are identified. The lasers on the side of the unit indicate the exact location of the center of target for accurate marking of targets embedded in the concrete.



## StructureScan Mini

### Deeper Signal Penetration

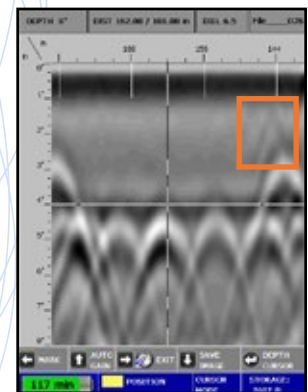
The StructureScan Mini is GSSI's portable integrated GPR system for concrete inspection. This handheld unit is used to locate rebar, conduits, post-tension cables, voids and determine concrete slab thickness.

With a 1600 MHz antenna, and depth penetration of up to 20 inches (50cm), the StructureScan Mini offers the perfect blend of data resolution and depth. Used worldwide, it has quickly become the standard for concrete imaging. Additionally, the StructureScan Mini is available with 2D or 3D capabilities, flexible for your job site needs.

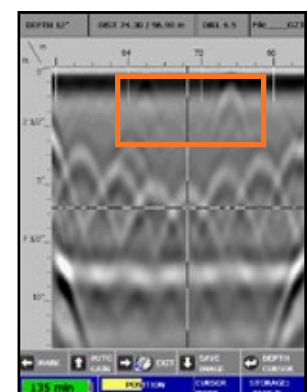
### System Specifications

Center Frequency: 1600 MHz  
Depth Range: Up to 20 inches (50 cm)  
Unit Weight (with battery): 3.3 pounds (1.6 kg)  
Dimensions: 6 (w) x 7 (h) x 9 (l) in. (15.24 x 17.78 x 22.86 cm)  
Languages: English, Spanish, French  
Environmental: IP-65

1600 MHz



*Data showing a small 5/8" plastic conduit (less visible) over rebar mat.*



*Small 1/2" conduits (less visible) very close to surface. Note strong horizontal reflection, representing bottom of slab.*

# StructureScan Mini HR

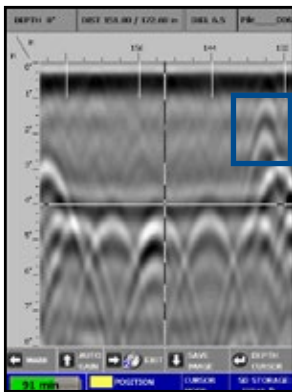
## Outstanding Data Resolution

The StructureScan Mini HR is GSSI's all-in-one high-resolution GPR system for concrete inspection. With a 2600 MHz antenna, this hand-held system locates rebar, conduits and post-tension cables in depths of up to 16 inches (40 cm).

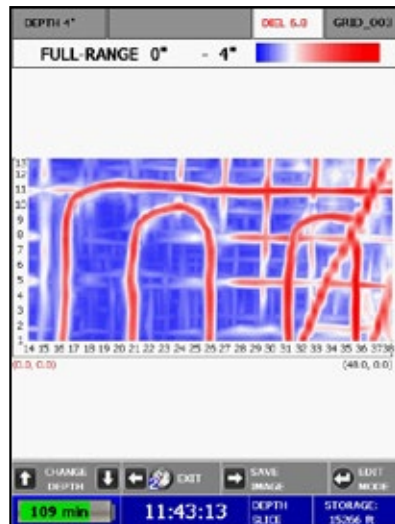
The StructureScan Mini HR is available in two models; 2D, for real-time target location and 3D, for an x-ray like image. Ideal for complex areas, the StructureScan Mini HR can delineate small targets with superior vertical and horizontal resolution.



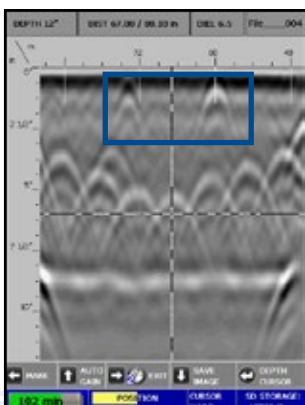
### 2600 MHz



*Data showing a small 5/8" plastic conduit over rebar mat.*



*Collected with StructureScan Mini HR, data represents 3D image of radiant heating tubing in concrete slab.*



*Small 1/2" conduits very close to surface. Note sharp hyperbola tails.*

## Typical Uses for StructureScan Mini Series

- Concrete inspection – locate metallic and non-metallic targets in walls, floors and ceilings
- Structure inspection – bridges, monuments, walls, towers, tunnels, balconies, garages, decks
- Condition assessment – map relative concrete condition for rehab planning
- Measure slab thickness
- Void location

## System Specifications

Center Frequency: 2600 MHz  
Depth Range: Up to 16 inches (40 cm)  
Unit Weight (with battery): 3.3 pounds (1.6 kg)  
Dimensions: 6 (w) x 7 (h) x 9 (l) in. (15.24 x 17.78 x 22.86 cm)  
Languages: English, Spanish, French  
Environmental: IP-65



# Software Solutions

## RADAN® for StructureScan Mini

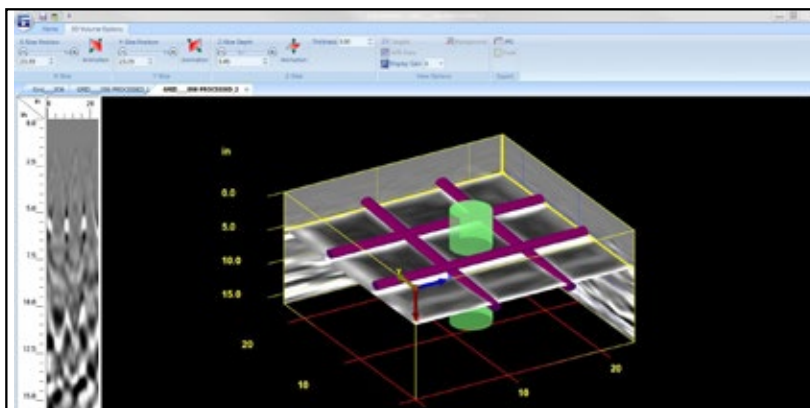
RADAN for StructureScan Mini is a post-processing software package for the StructureScan Mini Series. It is designed to process, view, and document 2D and 3D data collected with the StructureScan Mini and StructureScan Mini HR. The software features bold and intuitive menu screens and clear data views for easy interpretation and enhanced post-processing capabilities.

### Data Processing and Annotation

- Processing of 3D data sets collected with the StructureScan Mini and Mini HR
- 3D target input – customize size and color of targets
- Virtual 3D borehole
- Multiple color table and transform options
- Windows® 7 based user-interface

### Visualization

- Background Removal filtering
- Data Migration (focusing)
- Gain (Contrast) Control
- Use Ground Truth for accurate depth calculations



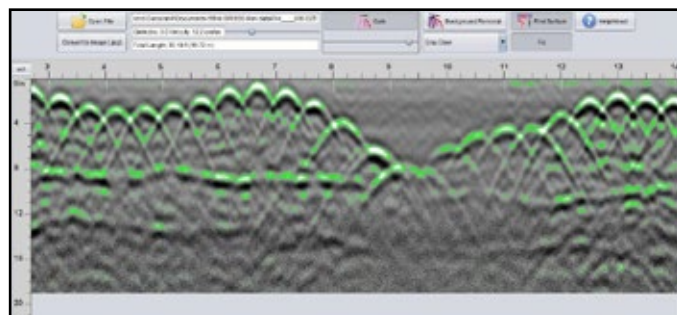
*Data illustrates a volumetric view of a rebar mat with user-defined virtual borehole location.*

### Report Building

- Report Writer – custom report output using MS Excel
- Copy data images to third party software for documentation purposes
- Add targets as colored circles and export target information in an Excel format
- Save data images as a JPG file
- Print to all Windows supported printers

## StructureScan Mini Viewer

The StructureScan Mini Viewer software is a free online visualization program for the GSSI StructureScan Mini. The software is ideal for basic post processing of 2D StructureScan Mini data files.



*Data shows 2D wire mesh with a well defined bottom of slab.*

### Systems Include

StructureScan Mini or StructureScan Mini HR  
Dual Battery Charger  
Two Batteries  
Hand Strap  
Transit Case

Quick Start Guide  
Training Video  
Data collection grids (3D system)  
2-year warranty

[www.geophysical.com](http://www.geophysical.com) • [sales@geophysical.com](mailto:sales@geophysical.com)

12 Industrial Way • Salem, NH 03079-2837  
Tel: (603) 893-1109 • Fax: (603) 889-3984